

WELCOME TO YEAR 3

Willow Class

Mr Prentice

Mrs Salter

Ms Lane

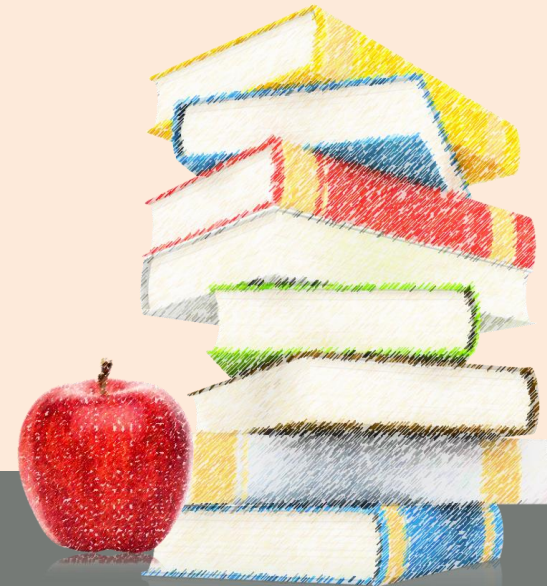
Mrs Herbert (PPA)

Hawthorn Class

Mr Fernandes

Mrs White (PPA)

Mrs Cox



Curriculum

Our topics this year are:

Food Glorious Food (healthy eating)

Dorking (Our Local Area - inc
Victorians)

Stone Age to the Iron Age

Power of Plants

Wonderful Wales



Uniform

- PLEASE MAKE SURE EVERYTHING IS NAMED.

Please bring a:

- named waterproof coat everyday
- Trainers in school everyday
- Named water bottle
- Fruit snack (named)
- Stud earrings only
- Black shoes (trainers in bags)
- White/blue plain sock
- Polo shirt to be tucked in



PE – Kit etc.

- Both Willow and Hawthorn have PE on Tuesdays and Fridays
- Please come into school in PE kit with **school shoes** on. Children **must** have a change of shoes with them for these days otherwise they may not be able to actively take part in the lesson if on the field.
- Children should not wear earrings during P.E lessons and will need to remove them if they are wearing them. Please ensure they have a named container to keep them safe and they have practiced taking them in and out themselves.
- Asthma inhalers must have been brought into school.
- All items must be named.



HP



Clubs



- There will be a selection of clubs which the children can take part in this year. Most of these will happen during the school day (lunchtime).
- The children will be told which clubs will be running. So, if your child would like to take part in sport clubs, they will need to be dressed in P.E kit on that day also.
- There are numerous cross-country competitions through the winter and autumn terms which generally take place after school.



TRIPS

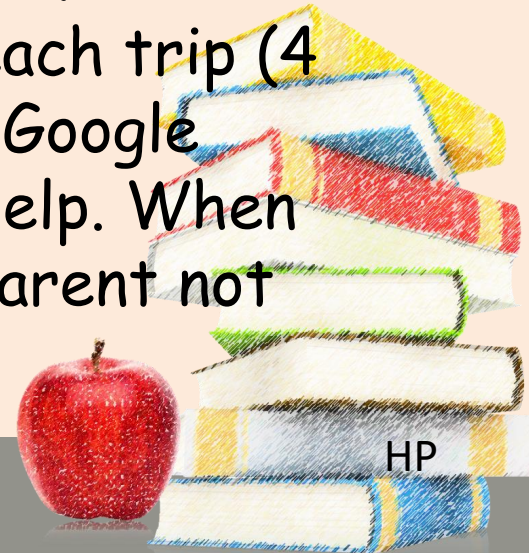
Local area walk (Victorian) (15th November morning 8/10 helpers per class)

Butser Farm (Bronze Age to Iron Age) - 13th March

Surrey Music Festival -(25th February)

Wisley Gardens (Plants) - 16th May

We will need around 8 parent helpers for each trip (4 from each class if possible) We will send a Google form out shortly to ask if you are able to help. When helping on trips, our school policy is for a parent not to be in the same group as their child.



AF

Stationery

PLEASE MAKE SURE EVERYTHING IS CLEARLY NAMED.

Pencil Case (small - needs to fit in tray) - this will need to stay at school. All available, at cost, at the Stationery Shop (open every Lunchtime 12:05-12:15). Please order via SCOPAY.

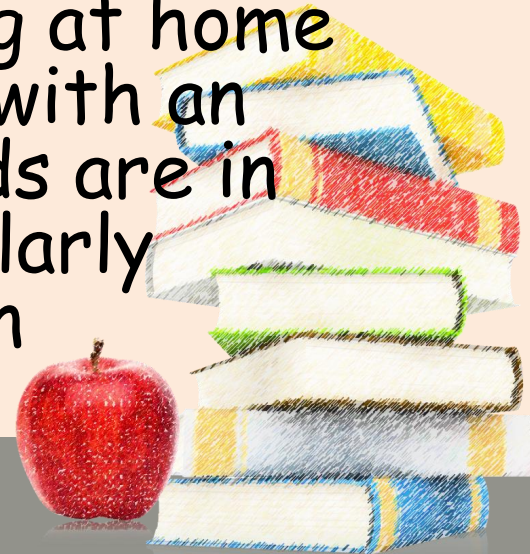
Small Backpack to carry Lunch / Book / extra colouring pens/pencils if wanted.



Homework

- Maths homework will be set weekly (every Friday on MyMaths).
- Children will also be given a login for TT Rockstars which they can use to practise their times tables.
- Reading: Children should be reading at home at least 5 days a week, 3 of which with an adult. Please ensure reading records are in daily as these will be checked regularly (Both classes will collect them in on Mondays)

HP



Accelerated Reader

What is it?

- Accelerated Reader (AR) enables us to match reading books to children's reading ability and helps teachers to assess, manage and monitor reading.

How does it work?

- Children from years 3 - 6 have been assessed in school using Accelerated Reader. (As year 2 complete the Little Wandle phonics scheme, they too will be assessed).
- Each child has a colour banded book.

How can you check if a book from is on AR?

- Parents can visit <http://www.arbookfind.co.uk> to search all of the available books with AR quizzes.
- If it's not there, then children can still read the book, but we encourage them to also have a book from school that is colour matched to their ability.

Quizzing

- When your child has finished reading their book, they can take a quiz online at home. This is a really useful way of seeing what they have learnt. Quizzes are best taken **within 24 hours of finishing the book.**
- They can earn badges for the number of words read - bronze 100k, silver 500k and gold 1 million +



How to log in

Renaissance
See Every Student.

St Paul's CofE (Aided) Primary School

— Student Log In —

[I'm not a student](#)

Username Please fill in this field.

Password Forgot Password?

Log In

Login details
are in the
back of
children's
reading
records

IMPORTANT 😊


We have a microsite with Accelerated Reader so *the **only way*** to log on is via this link: <https://global-zone61.renaissance-go.com/welcomeportal/6712704>

- Click on 'Accelerated Reader'

Renaissance ? LA



Home

Practice

 Accelerated Reader

Star Assessments

English

 Star Early Literacy EL  Star Reading R

Assignments

Showing All Assignments From Everyone

No assignments at this time

- Enter the book title

REINASCANCE

Accelerated Reader

Search for Books, Articles, or Quizzes

Enter a Title, Author, Quiz Number, or Keyword

Search

Help me find a book

Fox



Book
By Matthew Sweeney

Gerard is affected by the usual disadvantages when he moves to a new city and starts a new school. ...

ATOS Level **4.9**
Lexia® Level **770**
Interest Level **MY**
Points **4.0**
Quiz **206374 EN**
Language **English**

Take Quiz

- Click on 'Take Quiz'

Spelling Homework



- Spelling Homework in KS1 and 2 will be set **weekly** using Spelling Shed. This will allow children to learn spellings via a series of fun, interactive games.
- Login details are also in children's reading records.
- Weekly assignments will be set relating to the spelling pattern or phonics children are learning about.

Spelling Shed is part of Ed Shed

Click on School username tab



About

Careers

Store

Get a Quote

Ambassador

Webinars

Blog

Training

Help

Create Account

Sign In

Create Account

Sign In

QR Sign In

Global Username / Email

School Username



Only use this form if you are a pupil with a school # on your login slip.

School (search by name, id or postcode)

RH4 2HS

St Paul's Primary School, RH4 2HS

#126261

Enter school postcode RH4 2HS

Password

Your password

Sign In

Enter school username and password

Click on assignments

EdShed



Assignments

0

Games set for you.

[View >](#)

Challenges

Challenge others to play.

[View >](#)

Leagues

Player and class leagues.

[View >](#)

#

Enter 6-digit hive code to join game

[Join](#)

Phonics Shed

Play!

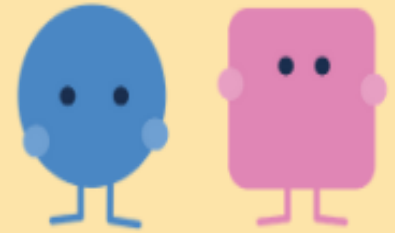
Spelling Shed

Play!

Maths Homework

- Maths homework will be set weekly on My Maths.
- Children should also practise their timetables weekly.

My Maths



- Log in at mymaths.co.uk
- Our school log in details are:
School username: stpauls20
School password: rectangle67

[← SCHOOL](#)**STUDENT****TEACHER****WONDE****MYLOGIN**

← STUDENT

LOG IN



RH4 2HS

St Paul's Primary School, Dorking RH4 2HS

Enter school postcode RH4 2HS

TT Rock Stars is up to date
Version 4.24.0904.1146



ST PAUL'S PRIMARY SCHOOL, DORKING

Change School

Username*



catdog



PASSWORD

or



PIN

Log In

Bookmark the following url to login faster:

Click on Password

PASSWORD

ST PAUL'S PRIMARY SCHOOL, DORKING

Change School

Username*



ethbar

Password*



...



Log In

Bookmark the following url to login faster:
<https://play.ttrockstars.com/login/22479>

TT Rock Stars is up to date
Version 4.24.0904.1146

Relationship Education

- RSE (Relationship and Sex Education) will be covered within PSHE lessons.
- A letter will be sent out prior to the start of the teaching.
- More information will be available on our Website under 'About Us > Curriculum > RSE'.

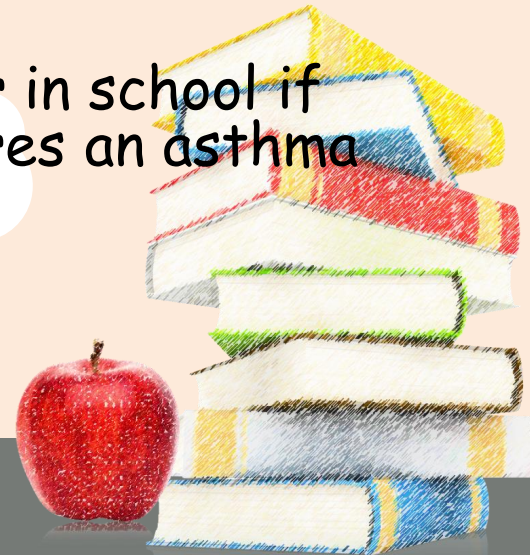


ALLERGIES/ MEDICATION

- No nuts or sesame
- No shellfish
- No legumes (beans, peas etc.)
- No KIWI

Please let us know if your child develops an allergy or has an intolerance.

Please ensure we have inhalers and the spacer in school if your child requires one. The office also requires an asthma plan from each child with an inhaler.



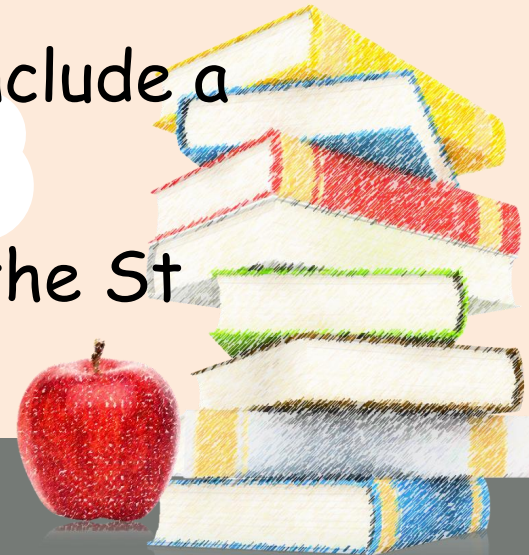
Upcoming meetings

- Parents evening - 16th October (**SEND**),
- 17th October (**for late**) and
- 22nd October (**for early**)
- These dates will also be on the newsletter.



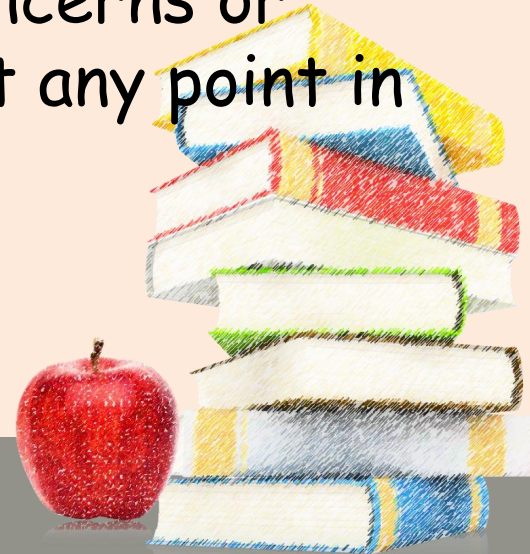
School Superstars board

- We really like to hear about the children's activities and achievements outside of school. Please do let us know about these and we can celebrate them in school.
- We would also really like for you to include a picture (where possible) of their achievements as this will be used on the St Paul's Superstars board.



AND FINALLY...

- Please let us know if there is anything happening in your child's life that may affect their day at school.
- Feel free to catch us after school at pick-up if you want to have a quick chat about any concerns or things you'd like to make us aware of at any point in the year.



- Please email both class teachers at
 - year3@stpauls-dorking.surrey.sch.uk
 - Please be aware that any emails sent to this address can be viewed by all of the Year 3 team
-
- If you have a concern:
 - Firstly, please speak to your child's teacher.
 - If you still have concerns, speak to Mrs McLeod (Key Stage 2 Leader)
 - If your concerns have not been resolved, please contact Mrs Alden via the school office.

