

WELCOME TO YEAR 1

Sycamore class

Miss Trease



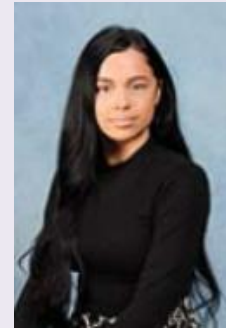
Mrs Fatima



Mrs Burch

Maple class

Miss Sollom



Miss Ruby



Mrs Moore

Support team in
Year 1



CURRICULUM for the Year

Available on the Website (please ask if you would like a paper copy)

| | Autumn | | Spring | | Summer | |
|--|---|-----------------------------------|--|--|---|---|
| Topic | If You Go Down to The Woods Today | Let's go exploring | Stories <u>From</u> Around The World | Animal Magic | Finding an egg (It's a secret but it's 'Dragons'!) | Are we nearly there yet? |
| Trips / Visits | | | | British Wildlife Centre | | Brooklands |
| Writing Books or inspirational text source | 'We're Going on a Bear Hunt' by Michael Rosen 'Where's My Teddy?' Jez <u>Alborough</u> | Lost and Found' by Oliver Jeffers | The Gingerbread Man (America) Baobab Tree (Africa) The Magic Porridge Pot (Europe) | Various books/websites based on animals 'Dear Zoo' (Rod Campbell) Animal fact posters DK findoutabout.com | <i>A series of letters:</i> A letter from Mr Smith (the caretaker at St. Paul's!) A mysterious letter from the Museum... Using <u>suffixes</u> :-ed -ing | Mrs Armitage on Wheels (Quentin Blake) Transport poems: <i>Go, go, go!</i> <i>At the Car Wash</i> <i>Down by the station</i> <i>Diggers!</i> Using <u>suffixes</u> :er -est |



UNIFORM

(List and suppliers available on the Website)

PLEASE MAKE SURE ALL UNIFORM IS CLEARLY NAMED

Please see handout or check the Uniform page on the Website.

<https://www.stpaulsschool-dorking.co.uk/page/?title=Uniform&pid=109>

At St Paul's we feel that uniform is really important as it helps us to feel together as a community and to take pride in our sense of unity. We have simplified our uniform so that we have just one uniform all year round.

Uniform (All year round) – All Years

- Logo embossed navy-blue sweatshirt or cardigan
- Pale blue polo shirt with logo
- Navy-blue trousers/shorts or Navy-blue skirt/pinafore
- Plain Navy-blue socks or plain Navy-blue tights.
- Black school shoes – not trainers or ankle boots (unless special permission is given)
- Sky blue and white checked summer dress (Summer alternative only between Easter and October half term).
- White socks
- Pac-a-mac (to be kept in back-pack at all times).
- Warm coat for Winter (bright colours are preferable due to safety when walking to and from school on dark/dim mornings or afternoons).

PE Uniform

- Logo embossed Navy-blue PE T-Shirt
- Navy-blue shorts or ~~skirt~~ – no shorter than mid-thigh
- Plain navy-blue joggers or plain navy-blue leggings (no logos, stripes or colours).
- Logo embossed navy-blue sweatshirt OR Logo embossed navy-blue hoodie. (Please note: cardigans cannot be worn for PE for safety reasons).
- School Shoes (as above) – to be worn into School on PE Days
- Navy-blue socks (no tights please).
- Logo embossed PE Bag (available from the School Office) containing:
 - Trainers (these should be kept in School)
 - A plain Navy-blue base layer top may be worn for extra warmth if required under school tops or PE tops. Base layers should not be worn under shorts, as all children can wear Navy-blue joggers/leggings.

All uniform items should be clean, clearly labelled with the child's name and in good condition.

Hair should be tied up if it is shoulder length or longer and the hair band should be plain and either, blue, black, brown or white.

Jewellery should be worn except for plain, small gold or silver stud earrings. Earrings MUST NOT be worn on PE days.

School uniform is available locally at a reasonable cost (see below or on our website for stockists). There is an ample stock of second hand uniform (organised by FOSPA), if you would like to purchase some, please make enquiries through the school office.

If you have any questions, please contact the School Office via the contact page on our website or by email to info@stpauls-dorking.surrey.sch.uk or by telephone on 01306-383547.

Logo items are stocked by these suppliers:

Love Your Logo/In-Press Promotions,
Ashcombe House
London Road
Dorking

Or online at:

Love Your Logo: <http://www.loveyourlogoschoolwear.com/>

School Trends: <http://www.schooltrendsonline.com/schools/StPaulsPrimarySchoolrh42hs> (sample sizes are available in the school office)

My Clothing: <https://myclothing.com/ueslink/5881.school?t=1587628735044> (formerly Tesco Uniform)



PE Days

PE Days for Year 1 are Monday and Wednesday.



Please remember that the children need to come into School in **PE KIT** on PE days, they will wear this all day. (school shoes to School and with trainers in a School PE Bag that should be kept at School - this is so that they can play on the field on other days). They should also come in wearing PE kit on any sports club days.

A navy tracksuit is essential for cold weather.

Children must not wear earrings on PE Days.



OTHER KIT

**PLEASE MAKE SURE EVERYTHING IS
CLEARLY NAMED.**

Please bring these objects EVERY day:

- A coat (a small pack-a-mac, we know British weather can change!)
- Reading record (Please keep this in children's bags every day)
- Book bag



TRIPS / EVENTS

Tuesday 10th December - KS1 Christmas service at the church.

March TBC Sycamore Class Assembly

Jan/Feb TBC Maple Class Assembly

19th March British Wildlife Centre

June (date TBC) Brooklands Transport Museum



Working together

- Home learning

Please also see separate Home Learning Summary



READING

- Reading in School - Reading at Home.
- Children can borrow books from School or read books from home.
- Please make sure they have their current reading book with them every day.
- Please encourage your child to read **5 times a week** and **at least** twice a week *with an adult* and to complete their Reading Records.
- Remember to 'sign/comment on' the Reading Record when you have read with your child.
- Parent Readers - we are always looking for parent helpers with reading through the entire School. Please contact the Office if you can help.



Spelling Homework



- Spelling Homework in KS1 and 2 will be set **weekly (FROM OCTOBER)** using Spelling Shed. This will allow children to learn spellings via a series of fun, interactive games.
- Login details are also in children's reading records.
- Weekly assignments will be set relating to the spelling pattern or phonics children are learning about.

Spelling Shed is part of Ed Shed

Click on School username tab



About

Careers

Store

Get a Quote

Ambassador

Webinars

Blog

Training

Help

Create Account

Sign In

Create Account

Sign In

QR Sign In

Global Username / Email

School Username



Only use this form if you are a pupil with a school # on your login slip.

School (search by name, id or postcode)

RH4 2HS

St Paul's Primary School, RH4 2HS

#126261

Enter school postcode RH4 2HS

Password

Your password

Sign In

Enter school username and password

Click on assignments

EdShed



Assignments

0

Games set for you.

View >

Challenges

Challenge others to play.

View >

Leagues

Player and class leagues.

View >

#

Enter 6-digit hive code to join game

Join

Phonics Shed

 Play!

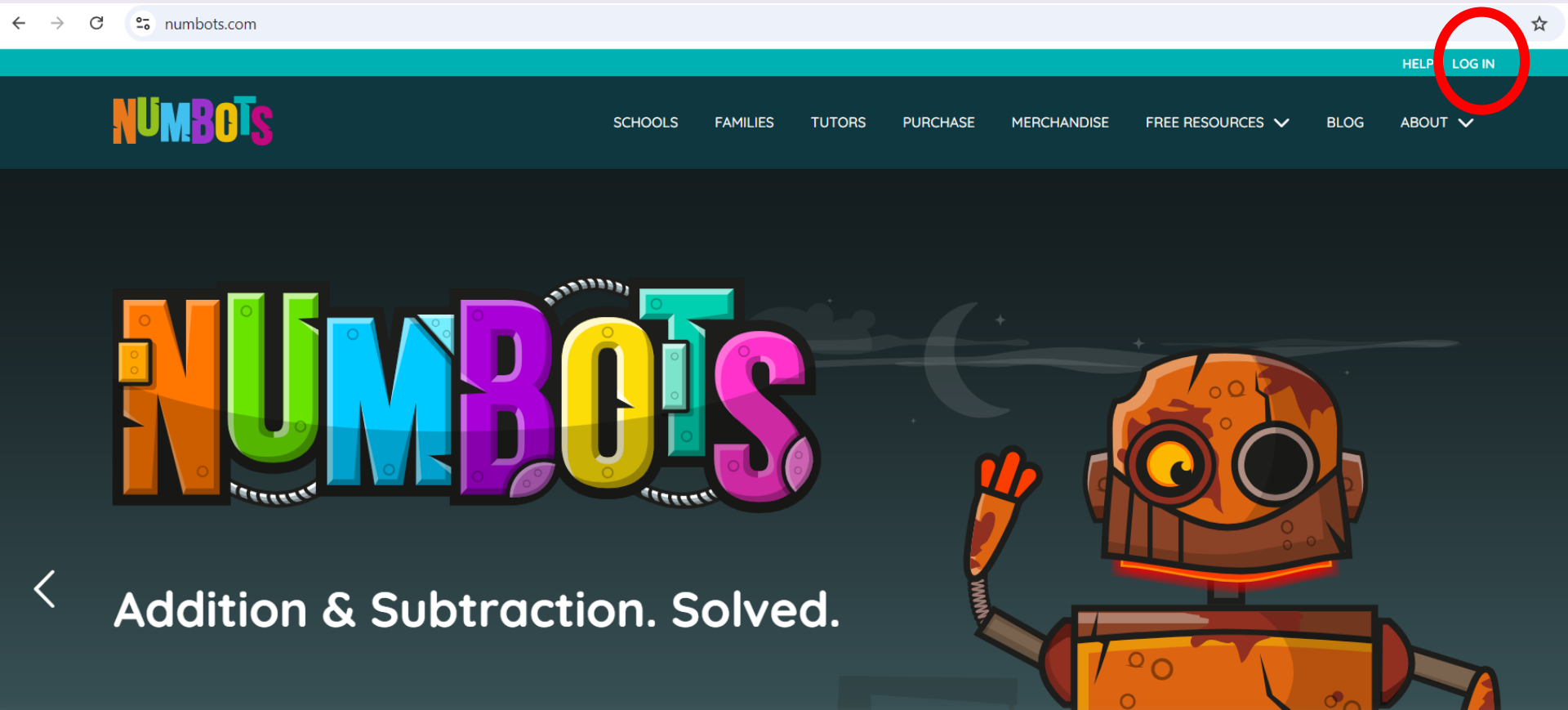
Spelling Shed

 Play!

Maths Homework

- Maths homework will be set weekly on Numbots. - Free access

Click login, then pupils on the Numbots website





Type in Dorking and scroll until you find St Paul's

Type in your child's username and click
password to type in the 3 letter code.
(as the year progresses encourage them
to have a go at logging themselves in with
your supervision)

St Paul's Primary School, Dorking

[Not your school?](#)

 Username

 or 

password pin

Handwriting

In Years 1 to 4 parents can log onto our handwriting scheme using the details below.

Letter-join

Features Videos Key Stages Worksheets News Buy

Login

Desktop

Tablet

Free Trial

Desktop Login

Username: qr8447

Password: home



login

Please select 'desktop or tablet'.
(Tablet is more suitable)

Letter-join Videos and Powerpoint training



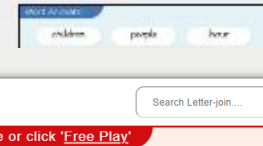
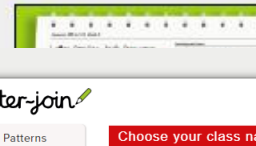
Letter-join overview >



Staff presentation >



Choosing fonts



Then select
the class

Letter-join

Search Letter-join...

Choose your class name or click 'Free Play'

| | |
|-----------|----------|
| Free Play | Rowan |
| Hawthorn | Chestnut |
| Willow | Beech |
| Maple | Hazel |
| Sycamore | |

Don't see your class? Ask your school to set your Class Name

- Patterns
- Easy letters
- Easy words
- Harder letters
- Harder words
- More...
- Phonics
- Fun
- Resources
- Info

Relationship Education

- RSE (Relationship and Sex Education) will be covered within PSHE lessons.
- A letter will be sent out prior to the start of the teaching.
- More information will be available on our Website under 'About Us > Curriculum > RSE'.



OUR CLASSROOM

Seating groups (will move around regularly - we aim to support them to be able to work with lots of different partners to help to prepare for Secondary School).

Pegs - only for coats and PE kits. Backpacks should be **small**.

- **Water** (Only Water, no squash etc.). All water bottles will be sent home daily for a wash and refresh.
- **Snacks** (Only fruit or veg, please cut grapes in half)
- **Please name Water Bottles and fruit.**



ALLERGIES

- No nuts or sesame - we have staff in the team with allergies
- No shellfish
- No kiwi

Please let us know if your child develops an allergy or has an intolerance.



MEDICAL

- Please make sure that you have spoken to the Office if your child needs medical support at School such as an inhaler or EpiPen.
- Please ensure that all Inhalers and EpiPens are clearly labelled.
- Please make sure that Inhalers and EpiPens are **in date**.



PARENTS' EVENINGS

- Parents' evenings are notified in the Newsletter.
- Parents' evenings are held in the Autumn and Spring Terms.
- There will be a longer Parents' evening for Parents who have children on the SEND register.



COMMUNICATION

If you do have any questions or queries, please contact The Year 1 Team, in the first instance, via:

- the Year X email address (Year1@stpauls-dorking.surrey.sch.uk) - read by any member of year group team;
- the School Office (info@stpauls-dorking.surrey.sch.uk) - confidential enquiries;
- by telephone to the School Office (01306 883457); or
- by using the Contact Us form on the Website.

If the Team is not able to help, please contact:

Mr Hill (Phase Leader KS1) / Mrs McLeod (Phase Leader KS2);

Mrs Bryan (Deputy Headteacher); and finally

Mrs Alden (Headteacher)

via the School Office.



WHEELS TO SCHOOL

- Pupils may ride bikes or scooters to school at parents' discretion.
- Please ensure that they wear a helmet and that it is correctly fitted and fastened.
- Children should dismount and enter through the Year 3-4 gate.
- 'Vehicles' should be left in the KS2 bike park (by the 'Star of the Week' entrance).
- Please ensure you speak to your child about taking care in the Lane and StPs Road E as there are lots of young children walking along at drop-off and pick-up time and they are un-predictable and fast!
- Bikes and scooters must not be ridden in School!



AND FINALLY...

- We are here to help and are always happy to make time to talk with you.
- Please let us know if there is anything happening in your child's life that may affect their day at school.



Thank you!

Questions?

Any Questions?

